

ORDER NO.	WEIGHT	CODE NO.
BS-0	20kgs	1001-050
BS-1	33kgs	1001-051

Standard Accessories

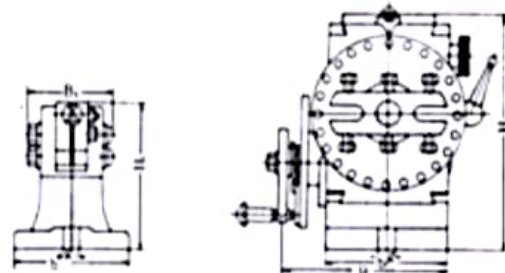
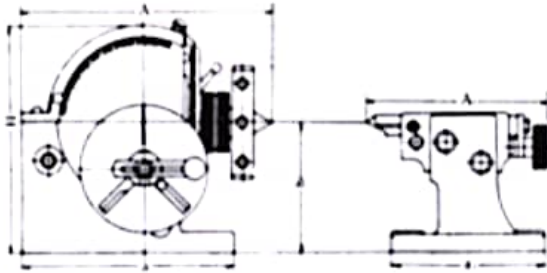


THREAD SPINDLE:BS-0, 1½ -8TPI
BS-0, 1½ -8TPI

Dividing Plate A,B,C

Numbers of hole	Plate A	15	16	17	18	19	20
	Plate B	21	23	27	29	31	33
	Plate C	37	39	41	43	47	49

centertarash



Semi-Universal Index B & S Type No.0 No.1(Head-stock):

Unit:mm/inches.

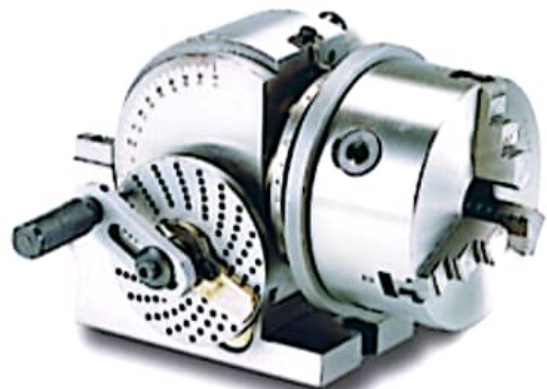
ORDER NO.	A	B	H	h	a	b	g	TAPER OF CENTER	Diameter of spindle hole
BS-0	189 7 7/16	140 5 5/16	173 6 1/8	100 3 15/16	160 6 3/8	91 3 7/16	13 1/2	MT-2	18
BS-1	293 11 7/16	156 6 1/4	220 8 7/16	128 5 1/4	207 8 1/2	114 4 3/8	16 5/8	MT-3	20

Semi-Universal Index B & S Type No.0 No.1 (Tail-Stock):

Unit:mm/inches

ORDER NO.	A1	B1	H1	h	a1	b1	g1
BS-0	167 6 37/32	80 3 1/2	107.5 4 15/64	100 3 9/16	130 5 1/8	92 3 7/8	13 1/2
BS-1	191 7 3/64	88 3 11/32	137 5 25/64	128 5 1/4	150 5 29/32	108 4 1/4	16 5/8

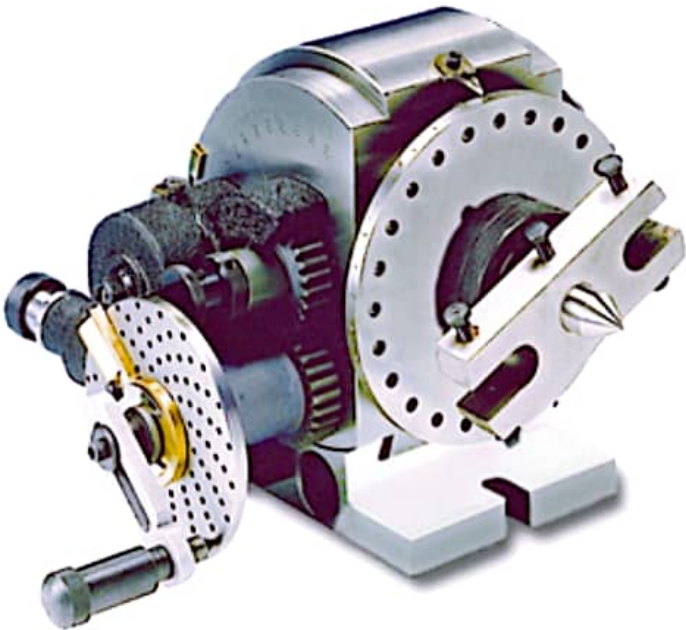
- 1.Dividing Head can divide in any angle by the direct, indirect, or different methods. The ratio between the worm and the worm gear is 40:1.
- 2.Hardened and ground spindle is rigidly held in a taper roller bearing. Worm is hardened and ground also.
- 3.The swivel head can be locked of any angle from 10° below horizontal to 90° vertical-precision fitting to base assures smooth rotation.
- 4.All models have threaded spindle nose and 24 hole dividing plate with easy conversion to fast direct indexing on numbers 2, 3, 4, 6, 8, 12, and 24.
- 5.Easy indexing of all numbers from 2 to 50 and many numbers from 52 to 380. Model BS-2 is also equipped for different indexing of all numbers from 2 to 380, and for spiral cutting.
- 6.Accurate precision, little backlash, fine appearance and strong structure so can assure smooth rotation.



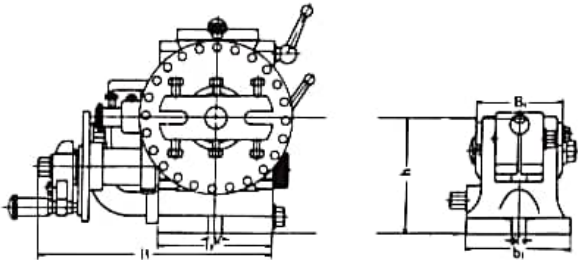
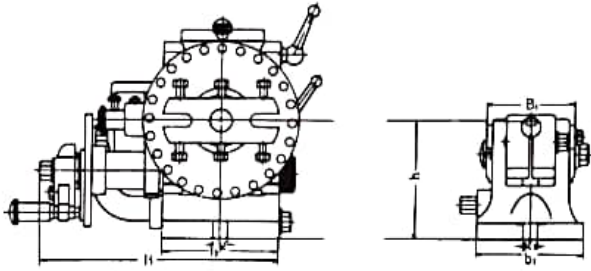
The state of BS-0 fitted with 5" 3-Jaw Chuck

ORDER NO.	WEIGHT	CODE.NO.
BS-2	65kgs	1001-052

Standard Accessories



THREAD SPINDLE: 2 1/4"-8TPI



Universal Index B & S Type No.2 (Head-stock)

Unit:mm/inches.

ORDER NO.	A	B	H	h	a	b	g	Taper of center	Spindle hole
BS-2	365 14 1/32	272 10 5/64	236 9 1/64	132.7 5 1/64	213 5 25/64	134 5 9/32	16 5/8	MT-4	25.4 1

centertarash

BS-2(Tail-stock)

Unit:mm/inches.

ORDER NO.	A1	B1	H1	h1	a1	b1	g1
BS-2	205~255 8 5/64 ~ 10 5/64	86 3 1/32	139 5 1/32	132.7 5 1/64	175 6 57/64	124 4 7/8	16 5/8

TEST REPORT

ITEM NO.	TESTING OBJECTIVE	VARIATION (INCHES)(MM) MAXIMUM TESTED	
1	TRUE RUNNING OF CENTER	0.0006(0.015)	
2	TRUE RUNNING OF INSIDE TAPER OF DIVIDING SPINDLE (1)MEASURED AT SPINDLE NOSE (2)MEASURED AT ARBOR 8-IN.LONG	(1)0.0004(0.01) (2)0.0012(0.03)	(1) (2)
3	AXIAL MOVEMENT OF DIVIDING SPINDLE	0.0004(0.01)	
4	DIVIDING ACCURACY OF WORM DRIVE MAXIMUM CUMULATIVE SPACING ERROR	1'30"	

ORDER NO.	Gross Weight kg	Meas. CFT	Applicable Chuck
BS-0	(C)20	0.8	4" OR 5"
BS-1	(C)33	1.3	5" OR 6"
BS-2	(C)65	3.4	6" ,7" OR 8"